



Stunning two bedroom apartments for shared ownership at the popular new Kingsley Park development in Arborfield.



Kingsley Park Canterbury House

Chaucer Grove,
Arborfield Green,
Berkshire RG2 9UT



Call **0300 330 0718**
Visit **sovereignliving.org.uk**

Kingsley Park Canterbury House

Kingsley Park is part of the new Arborfield Green garden village, an exciting new development close to Wokingham. Upon completion, the new village will benefit from a primary and secondary school, a gym and other leisure facilities, shops, cafes and acres of woodland for you to explore.

Plots 22, 25 & 28

These new homes come complete with:

- Fitted kitchen with oven, hob and extractor
- Flooring throughout
- Fitted wardrobe to bedroom one
- Ample storage
- One allocated parking space



Type A

Kitchen	3108mm x 3455mm
Living	4010mm x 4528mm
Bedroom one	3125mm x 3505mm
Bedroom two	3333mm x 3675mm
Bathroom	2153mm x 2361mm

A typical floorplan.
All dimensions are maximum.

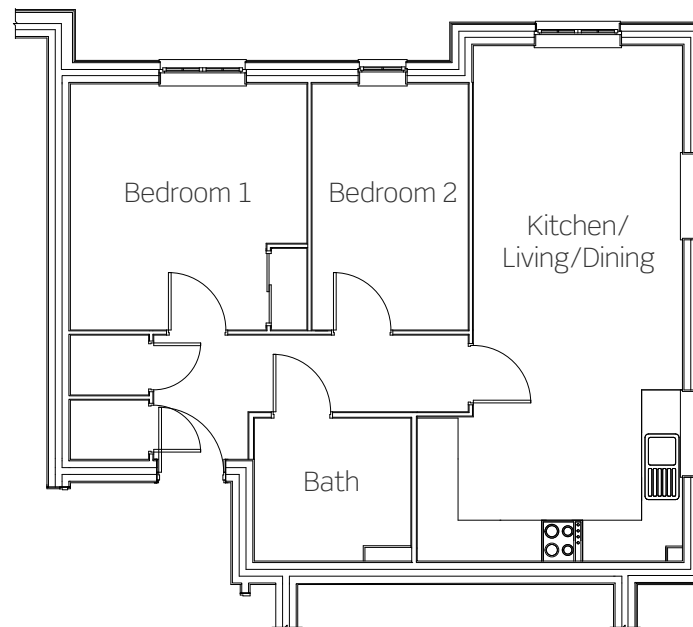
Kingsley Park Canterbury House

Kingsley Park is part of the new Arborfield Green garden village, an exciting new development close to Wokingham. Upon completion, the new village will benefit from a primary and secondary school, a gym and other leisure facilities, shops, cafes and acres of woodland for you to explore.

Plots 23, 26 & 29

These new homes come complete with:

- Fitted kitchen with oven, hob and extractor
- Modern open-plan living
- Flooring throughout
- Fitted wardrobe to bedroom one
- One allocated parking space



Type B

Kitchen/Living/ Dining	3687mm x 8197mm
Bedroom one	3510mm x 3650mm
Bedroom two	2320mm x 3650mm
Bathroom	2353mm x 2153mm

A typical floorplan.
All dimensions are maximum.

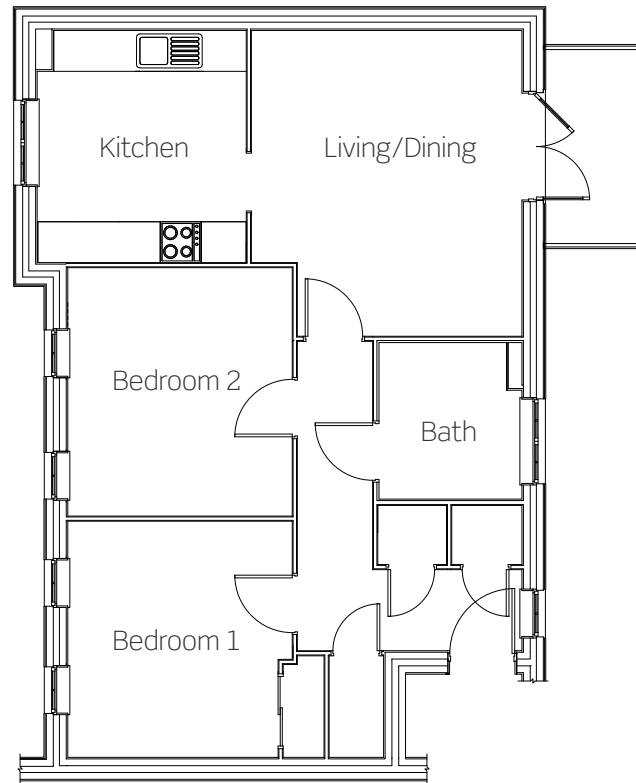
Kingsley Park Canterbury House

Kingsley Park is part of the new Arborfield Green garden village, an exciting new development close to Wokingham. Upon completion, the new village will benefit from a primary and secondary school, a gym and other leisure facilities, shops, cafes and acres of woodland for you to explore.

Plots 24, 27 & 30

These new homes come complete with:

- Fitted kitchen with oven, hob and extractor
- Flooring throughout
- Fitted wardrobe to bedroom one
- One allocated parking space



Type C

Kitchen	3107mm x 3601mm
Living/Dining	3924mm x 3966mm
Bedroom one	3577mm x 3444mm
Bedroom two	2253mm x 3444mm
Bathroom	2361mm x 2153mm

A typical floorplan.
All dimensions are maximum.

Kingsley Park

Chaucer Grove,
Arborfield Green,
Berkshire RG2 9UT

Call **0300 330 0718**
Visit **sovereignliving.org.uk**

 Plots 20 & 21
The Dart
3 bedroom house

 Plots 22-30
Canterbury House
2 bedroom apartment



Price list & availability

Plot	Property details	Price	35% share	Monthly rent	Monthly service charge	Availability
23	Two bedroom ground floor apartment	£275,000	£96,250	£223.44	£113.61	Available
25	Two bedroom first floor apartment	£280,000	£98,000	£227.50	£113.97	Available
26	Two bedroom first floor apartment	£275,000	£96,250	£223.44	£113.61	Available
28	Two bedroom second floor apartment	£275,000	£96,250	£223.44	£113.97	Available
29	Two bedroom second floor apartment	£275,000	£96,250	£223.44	£113.61	Available

Kingsley Park
Arborfield, Reading

0300 330 0718
living@sovereign.org.uk